



### Installing/Changing of Batteries

No. KEKAB-DL65, KEKAB-DL95X,  
KEKAB-DL265

1. Lay cabinet down and open door.
2. Remove (3) small metal screws as indicated in Fig. 1.  
NOTE: DO NOT REMOVE (2) LARGE ANCHOR  
SCREWS WHICH HOLD LOCK TO KEKAB®  
DOOR!
3. Remove plate. See Fig. 2.
4. Carefully connect (2) 9-volt batteries to receptacles as  
shown. See Fig. 3.
5. Replace plate and (3) small screws. See Fig. 4.
6. Remove tape from latch. See Fig. 5.

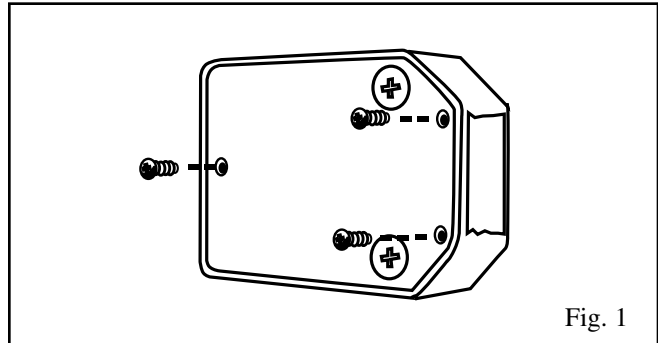


Fig. 1

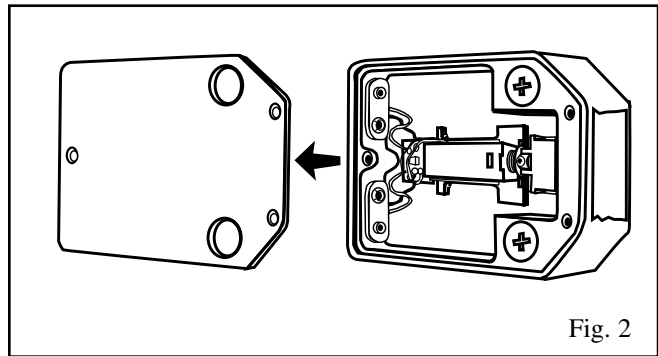


Fig. 2

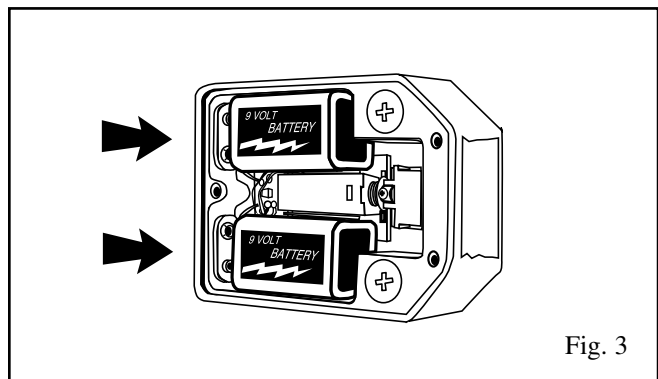


Fig. 3

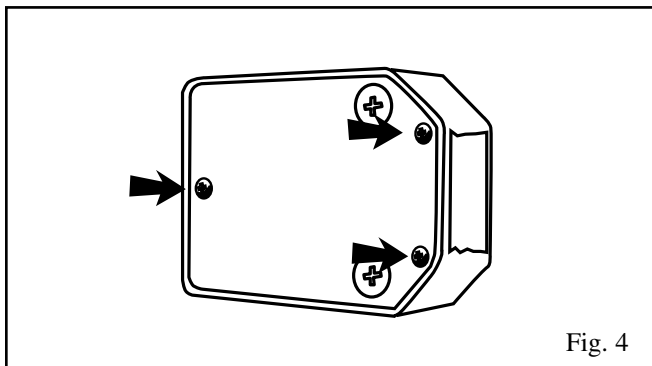


Fig. 4

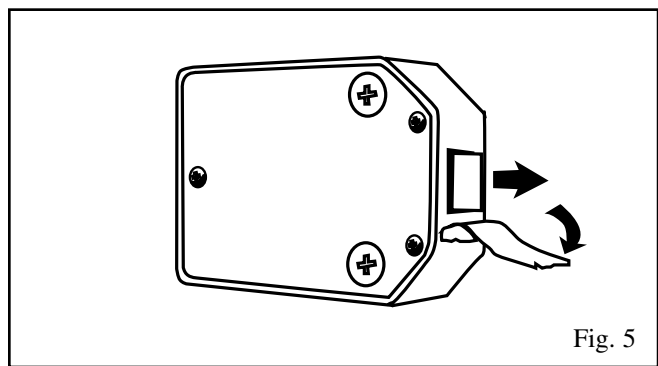


Fig. 5

(2)

(continued)



### OPERATION:

- HPC's Digital KeKabs operate with a User "programmable" 4-digit Code or the Manager "programmable" 5-digit Code. Entry of either of these codes opens the lock.
- If you accidentally make an error while entering the combination, press [C] at any time to start over.
- The magnetic catch inside the cabinet holds the door in place, allowing the spring latch to move freely during regular openings. If the spring latch ever binds, push the door inward while entering your combination.

### SECURITY:

**When opening the cabinet, entry of three consecutive incorrect combinations will disable the lock for one minute. Each successive incorrect entry will also result in "sleep state" for one minute.**


This prevents someone from entering random or sequential codes in an attempt to find the valid code.

### CODE LEVELS:

**The key to maintaining your Digital KeKabs is in the complete understanding of the following Code Levels:**

- The HPC Digital KeKab® comes with two Code Levels: Manager and User.
- The Manager Code can reprogram its own code and the User Code, as well as open the lock.
- The User Code can only reprogram its own code and open the lock.
- Once codes are changed, the factory pre-set codes will no longer operate the lock.

### LOW BATTERY INDICATOR:

The digital lock on your HPC Digital KeKab® uses two 9-volt alkaline batteries. When the batteries are low, the lock emits a low battery indicator sound  each time it is unlocked (three short consecutive beeps). This continues for several weeks before the lock becomes inoperable. Batteries should be replaced when the low battery indicator is heard. In case the batteries no longer operate the lock, the lock can be jumped with a fresh 9-volt battery via the override terminals on the face of the lock. (See instructions for KEKAB-DLJH on page 5.)



**OPERATING INSTRUCTIONS:**

**DEFAULT USER AND MANAGER CODES**

**NOTE:** New locks will operate with the default user and manager override codes until these codes have been changed.

1. THE USER CODE IS A FOUR-DIGIT CODE. THE DEFAULT USER CODE IS: **C 1 2 3 4 0**

2. THE MANAGER BYPASS CODE IS A FIVE-DIGIT CODE. THE DEFAULT MANAGER BYPASS CODE IS:

**C 1 2 3 4 5 0**

**PROGRAMMING INSTRUCTIONS:**

**TO CHANGE THE MANAGER BYPASS CODE:**

1. PRESS: **C 0**      **0** THE L.E.D. WILL TURN ON.  
(Existing Five Digit Manager Bypass Code)

2. PRESS: **C**      **0**  
(New Five Digit Manager Bypass Code)

3. PRESS: **C**      **0** THE L.E.D. WILL TURN OFF.  
(Repeat The New Five Digit Manager Bypass Code)

**TO CHANGE THE USER CODE**

**TO CHANGE THE USER CODE WITH THE MANAGER BYPASS CODE:**

1. PRESS: **C 0**      **0** THE L.E.D. WILL TURN ON.  
(Existing Five Digit Manager Bypass Code)

2. PRESS: **C**     **0**  
(New Four Digit User Code)

3. PRESS: **C**     **0** THE L.E.D. WILL TURN OFF.  
(Repeat The New Four Digit User Code)

**TO CHANGE THE USER CODE WITH THE USER CODE:**

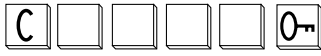
1. PRESS: **C 0**     **0** THE L.E.D. WILL TURN ON.  
(Existing Four Digit User Code)

2. PRESS: **C**     **0**  
(New Four Digit User Code)

3. PRESS: **C**     **0** THE L.E.D. WILL TURN OFF.  
(Repeat The New Four Digit User Code)



## TO OPERATE WITH A USER CODE:

1. TO UNLOCK:   
 (Registered Four-Digit User Code)

2. TO LOCK: CLOSE THE DOOR.

## TO OPERATE WITH A USER CODE:

1. TO UNLOCK:   
 (Registered Five-Digit Manager Bypass Code)

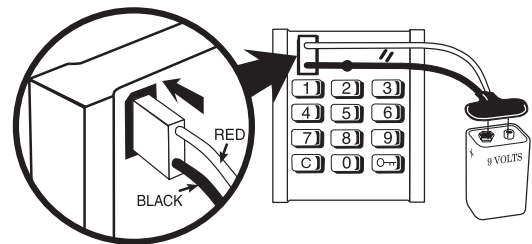
2. TO LOCK: CLOSE THE DOOR.

## TO USE THE DIGITAL KEKAB® JUMPER HARNESS (No. KEKAB-DLJH):

The digital lock on your HPC Digital KeKab® uses two 9-volt alkaline batteries. When the batteries are low, the lock emits a low battery indicator sound each time it is unlocked. This continues for several weeks before the lock becomes inoperable. Batteries should be replaced when the low battery indicator is heard. If the cabinet is shut and the batteries no longer operate the lock, the lock can be jumped with a fresh 9-volt battery via the port located on the upper left corner of the face of the lock.

- Engage the two metal contacts of the Jumper Harness plug into the port terminal in the upper left corner of the front of the main housing. The metal lead coming from the red (+) wire must contact the uppermost terminal and the metal lead coming from the black (-) wire must contact the lowermost terminal. Hold the Jumper Harness plug in place as you connect the battery. See Fig. 1.
- Next, connect a fresh 9-volt battery to the Jumper Harness battery receptacle. The lock will beep, indicating a solid connection. Hold the connection as you enter the code and unlock the unit as usual.
- If batteries have been disconnected for more than 5 minutes the lock may have gone back to its original factory codes.

*NOTE: Make sure that the conductive metal contacts on the plug do not make contact with the lock case and that the connections are correct (+ to + and - to -). Failure to do this will cause a short in the lock and drain the battery.*



## TROUBLESHOOTING

### 1. NO AUDIBLE FEEDBACK WHEN THE BUTTON IS DEPRESSED:

- The batteries have failed—replace the batteries located in the rear unit (page 2). Use the Jumper Harness with a valid user or manager code to unlock the cabinet. Then replace the batteries.
- There is a poor door connection—remove the lock from the door and reinstall it.
- The lock is in “sleep state.” Try again after one minute.

### 2. THE LOCK DOES NOT UNLOCK:

- Listen for additional audible feedback for an indication of what is happening.
- Try operating the lock with the Manager Code and the Jumper Harness.
- Contact your Digilok® product representative or Digilok® customer support.

### 3. THE LOCK EMITS TWO SETS OF THREE BEEPS DURING OPERATION:

- This is the **Low Battery Indicator**—replace the batteries located in the rear unit.

### 4. THE LOCK EMITS TEN RAPID BEEPS DURING OPERATION:

- This is the **Binding Indicator**—the lock is binding with the strike plate. Press firmly on the door while operating. If binding is a frequent occurrence, the strike plate and/or door hinges need to be aligned with the lock.